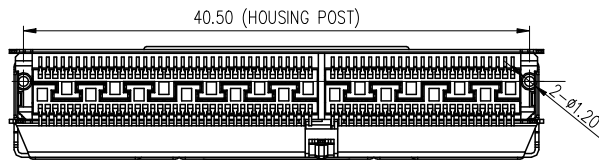
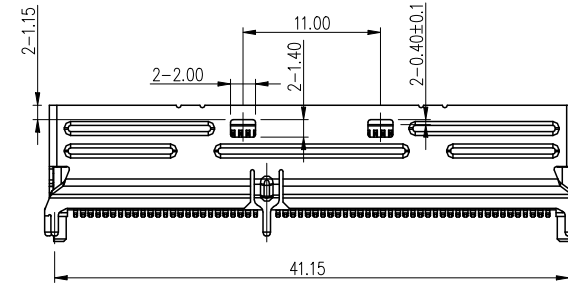
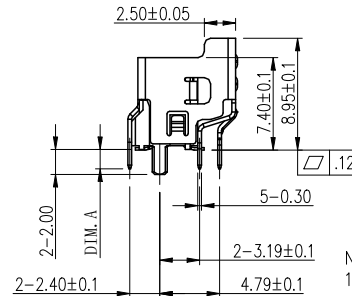
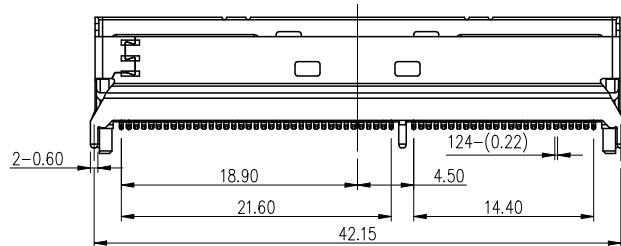
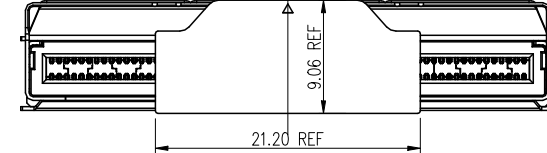
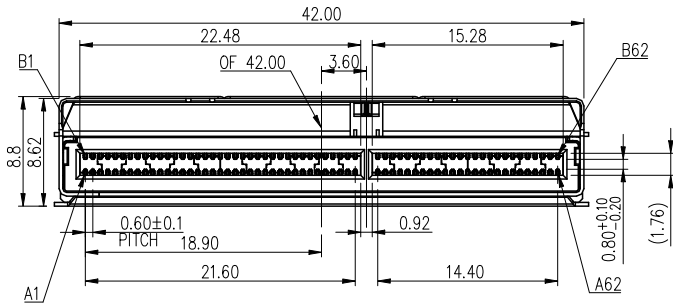


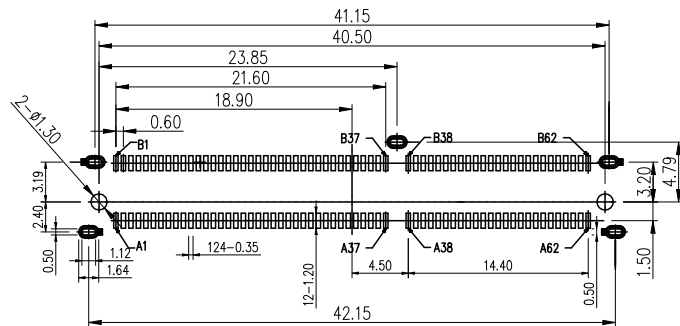
THIS DRAWING AND THE DATA DISCLOSED HEREIN OR HEREWITH IS NOT TO BE REPRODUCED USED OR DISCLOSED IN WHOLE OR IN PART TO ANYONE WITHOUT THE PERMISSION OF JESS-LINK PRODUCTS CO.,LTD.(JPC)

CUSTOMER DRAWING  
DRWC-007093

REV.	ECN NO.	DESCRIPTION	MDF'D	APP'D	DATE
01		INITIAL DESIGN	Veera	Jason	04/24/2023
02					
03					



NOTE:  
1.MATERIAL:  
HOUSING: HIGH TEMPERATURE PLASTIC UL 94 V-0;  
MOLDING: HIGH TEMPERATURE PLASTIC UL 94 V-0;  
TERMINAL: COPPER ALLOY(T=0.20mm)  
SHELL: STAINLESS STEEL(T=0.30mm)  
2.FLASH:  
CONTACT AREA: GOLD 30u" MIN; TAIL AREA: SEPARATED GOLD PLATING 1-5U"  
UNDER PLATING: NICKEL 100u" MIN ; SHELL: NICKEL 100u" MIN  
3.THIS PRODUCT DOESN'T CONTAIN ENVIRONMENTAL HAZARDOUS MATERIALS PER DIRECTIVE 2002/95/EC FOR ROHS AND PER IEC 61249-2-21 FOR HALOGEN FREE COMPLIANT



RECOMMENDED PCB LAYOUT  
(GENERAL TOLERANCES: ±0.05)

NO.OF PINS. MCIO RECEPTACLE P947A 124 4 3 1 R-0  
124:124 PIN.  
CONNECTOR STYLE  
4: STRAIGHT RECEPTACLE  
CONTACT PLATING OPTION:  
3: CONTACT AREA: GOLD 30u" MIN  
SOLDERING AREA: MATTE TIN 100~200u",  
OVERALL NICKEL 30~100u" UNDER PLATING  
PACKAGE OPTION:  
R: TAPE REEL  
SHELL PIN LENGTH  
DIM A 1: 1.5MM  
2: 2.2MM


RoHS COMPLIANT HALOGEN FREE	Unit: mm(inch)	PROJECTION 	<b>JPC connectivity</b> TITLE MCIO VT 16X CONNECTOR		PD./FILE NO. XXXXXXXXXX
	GENERAL TOLERANCES: (UNLESS SPECIFIED) 0 = ±1 (0.039) 0.0 = ±5 (0.02) 0.00 = ±3 (0.012) 0.000 = ±15 (0.006) 0° = ± 2° 0.0° = ± 1°	D.R. 04/24/2023 Veera CH.K 04/24/2023 Albert APV.D 04/24/2023 Jason			SCALE 1:1
	PART NO. P947A124431R-0			SHEET 1 OF 3	
	X-XXXX				

1	2	3	4	5	6	7	8				
	THIS DRAWING AND THE DATA DISCLOSED HEREIN OR HEREWITH IS NOT TO BE REPRODUCED USED OR DISCLOSED IN WHOLE OR IN PART TO ANYONE WITHOUT THE PERMISSION OF JESS-LINK PRODUCTS CO.,LTD.(JPC)			CUSTOMER DRAWING DRWC-007093		REV.	ECN NO.	DESCRIPTION	MDF'D	APP'D	DATE
						01		INITIAL DESIGN	Veera	Jason	04/24/2023
						02					
						03					

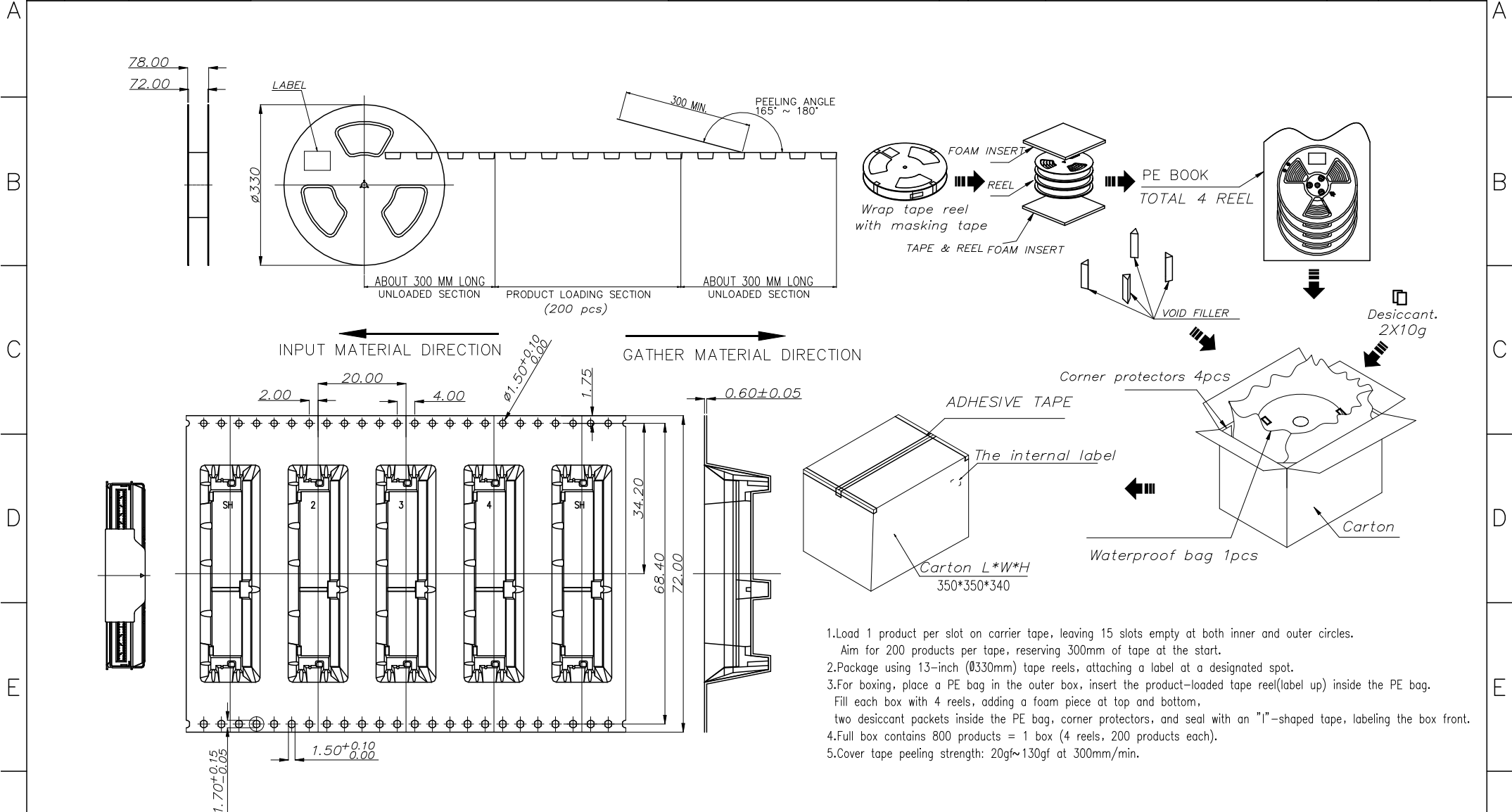
CONTACT LOCATION	SIDE-A	SIDE-B	CONTACT LOCATION
A1	GROUND	GROUND	B1
A2	SIGNAL	SIGNAL	B2
A3	SIGNAL	SIGNAL	B3
A4	GROUND	GROUND	B4
A5	SIGNAL	SIGNAL	B5
A6	SIGNAL	SIGNAL	B6
A7	GROUND	GROUND	B7
A8	SIGNAL	SIGNAL	B8
A9	SIGNAL	SIGNAL	B9
A10	GROUND	GROUND	B10
A11	SIGNAL	SIGNAL	B11
A12	SIGNAL	SIGNAL	B12
A13	GROUND	GROUND	B13
A14	SIGNAL	SIGNAL	B14
A15	SIGNAL	SIGNAL	B15
A16	GROUND	GROUND	B16
A17	SIGNAL	SIGNAL	B17
A18	SIGNAL	SIGNAL	B18
A19	GROUND	GROUND	B19
A20	SIGNAL	SIGNAL	B20
A21	SIGNAL	SIGNAL	B21
A22	GROUND	GROUND	B22
A23	SIGNAL	SIGNAL	B23
A24	SIGNAL	SIGNAL	B24
A25	GROUND	GROUND	B25
A26	SIGNAL	SIGNAL	B26
A27	SIGNAL	SIGNAL	B27
A28	GROUND	GROUND	B28
A29	SIGNAL	SIGNAL	B29
A30	SIGNAL	SIGNAL	B30
A31	GROUND	GROUND	B31

CONTACT LOCATION	SIDE-A	SIDE-B	CONTACT LOCATION
A32	SIGNAL	SIGNAL	B32
A33	SIGNAL	SIGNAL	B33
A34	GROUND	GROUND	B34
A35	SIGNAL	SIGNAL	B35
A36	SIGNAL	SIGNAL	B36
A37	GROUND	GROUND	B37
A38	GROUND	GROUND	B38
A39	SIGNAL	SIGNAL	B39
A40	SIGNAL	SIGNAL	B40
A41	GROUND	GROUND	B41
A42	SIGNAL	SIGNAL	B42
A43	SIGNAL	SIGNAL	B43
A44	GROUND	GROUND	B44
A45	SIGNAL	SIGNAL	B45
A46	SIGNAL	SIGNAL	B46
A47	GROUND	GROUND	B47
A48	SIGNAL	SIGNAL	B48
A49	SIGNAL	SIGNAL	B49
A50	GROUND	GROUND	B50
A51	SIGNAL	SIGNAL	B51
A52	SIGNAL	SIGNAL	B52
A53	GROUND	GROUND	B53
A54	SIGNAL	SIGNAL	B54
A55	SIGNAL	SIGNAL	B55
A56	GROUND	GROUND	B56
A57	SIGNAL	SIGNAL	B57
A58	SIGNAL	SIGNAL	B58
A59	GROUND	GROUND	B59
A60	SIGNAL	SIGNAL	B60
A61	SIGNAL	SIGNAL	B61
A62	GROUND	GROUND	B62

TYPEC-1 CONNECTOR CONTACT TYPES BY LOCATION-WITH NO SIDE BANDS

<b>RoHS COMPLIANT</b>	<b>HALOGEN FREE</b>	Unit: mm(inch)		<b>JPC connectivity</b>		PD./FILE NO. XXXXXXXXXX	
		GENERAL TOLERANCES: (UNLESS SPECIFIED) 0 = ±1 (0.039) 0.0 = ±.5 (0.02) 0.00 = ±.3 (0.012) 0.000 = ±.15(0.006)					D.R. 04/24/2023 Veera CH.K 04/24/2023 Albert APV.D 04/24/2023 Jason
		SCALE		SIZE	PART NO.		SHEET 2 OF 3
		1:1		A4	P947A124431R-0		

1	2	3	4	5	6	7	8				
THIS DRAWING AND THE DATA DISCLOSED HEREIN OR HEREWITH IS NOT TO BE REPRODUCED USED OR DISCLOSED IN WHOLE OR IN PART TO ANYONE WITHOUT THE PERMISSION OF JESS-LINK PRODUCTS CO.,LTD.(JPC)				CUSTOMER DRAWING DRWC-007093		REV.	ECN NO.	DESCRIPTION	MDF'D	APP'D	DATE
						01		INITIAL DESIGN	Veera	Jason	04/24/2023
						02					
						03					



1. Load 1 product per slot on carrier tape, leaving 15 slots empty at both inner and outer circles. Aim for 200 products per tape, reserving 300mm of tape at the start.
2. Package using 13-inch (Ø330mm) tape reels, attaching a label at a designated spot.
3. For boxing, place a PE bag in the outer box, insert the product-loaded tape reel (label up) inside the PE bag. Fill each box with 4 reels, adding a foam piece at top and bottom, two desiccant packets inside the PE bag, corner protectors, and seal with an "I"-shaped tape, labeling the box front.
4. Full box contains 800 products = 1 box (4 reels, 200 products each).
5. Cover tape peeling strength: 20gf~130gf at 300mm/min.

<b>RoHS COMPLIANT</b>	<b>HALOGEN FREE</b>	Unit: mm(inch)	PROJECTION	<b>JPC connectivity</b>		
		GENERAL TOLERANCES: (UNLESS SPECIFIED)	D.R. 04/24/2023			
		0 = ±1 (0.039)	Veera	MCIO VT 16X CONNECTOR	PD./FILE NO. XXXXXXXXX	
		0.0 = ±5 (0.02)	CH.K 04/24/2023	SCALE	SIZE	PART NO.
0.00 = ±3 (0.012)	Albert	1:1	A4	P947A124431R-0	SHEET 3 OF 3	
0.000 = ±15 (0.006)	APV.D 04/24/2023					
0' = ±2'	Jason					
0.0' = ±1'						